

VELA

---

)( *Dorchester Collection*

DUBAI

## MARINA RESIDENCES

Four Bedroom Double-Height Residences  
with Private Pools



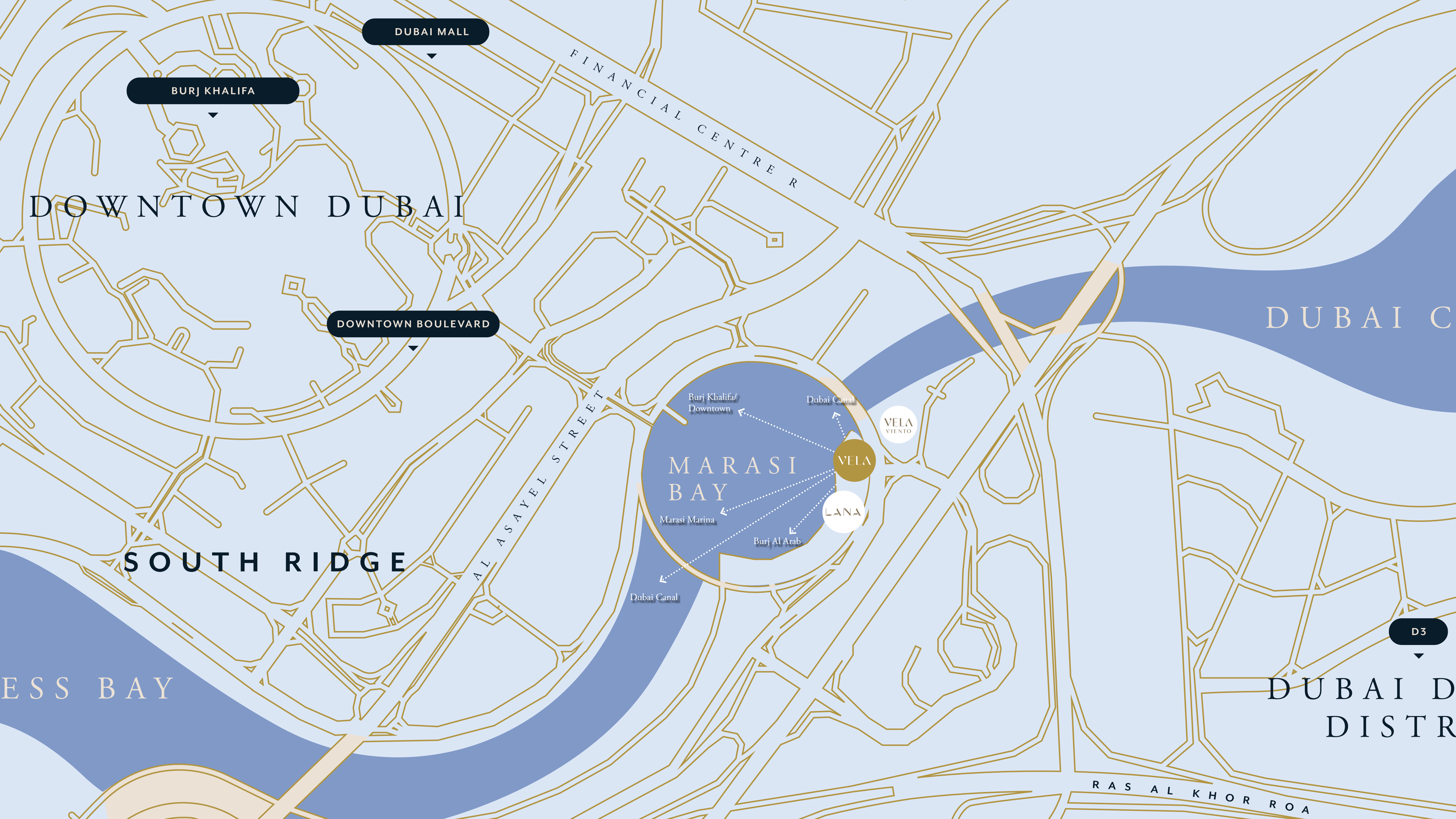


## Sublime *Waterfront Living*

Embraced by the flowing beauty of Marasi Bay and held within awe-inspiring architecture, VELA Marina Residences present a sublime celebration of waterfront living in Dubai.

Majestic interiors and views meet to create a place of true beauty, and within Dorchester Collection's legendary service, a lifestyle of comfort and ease awaits.





DUBAI MALL

BURJ KHALIFA

DOWNTOWN DUBAI

DOWNTOWN BOULEVARD

FINANCIAL CENTRE R

DUBAI C

Burj Khalifa/  
Downtown

Dubai Canal

VELA  
VIENTO

MARASI  
BAY

VELA

Marasi Marina

LANA

Burj Al Arab

Dubai Canal

SOUTH RIDGE

AL ASAYEL STREET

ESS BAY

D3

DUBAI D  
DISTR

RAS AL KHOR ROA

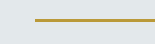


# Waterfront *Retreats*

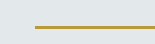
Within the Marina Residences collection, the 4-Bedroom Double Height Residences with Pool redefine luxury waterfront living.

- Positioned closer to the tranquil waters of Marasi Bay
- Range from 7,338 to 7,373 sq. ft.
- Views of Marasi Bay, Burj Khalifa and Downtown Dubai
- Expansive terraces
- Infinity-edge 9.3m private pools
- Interior design by Gilles & Boissier
- Fully-furnished and equipped

SKY  
PALACE



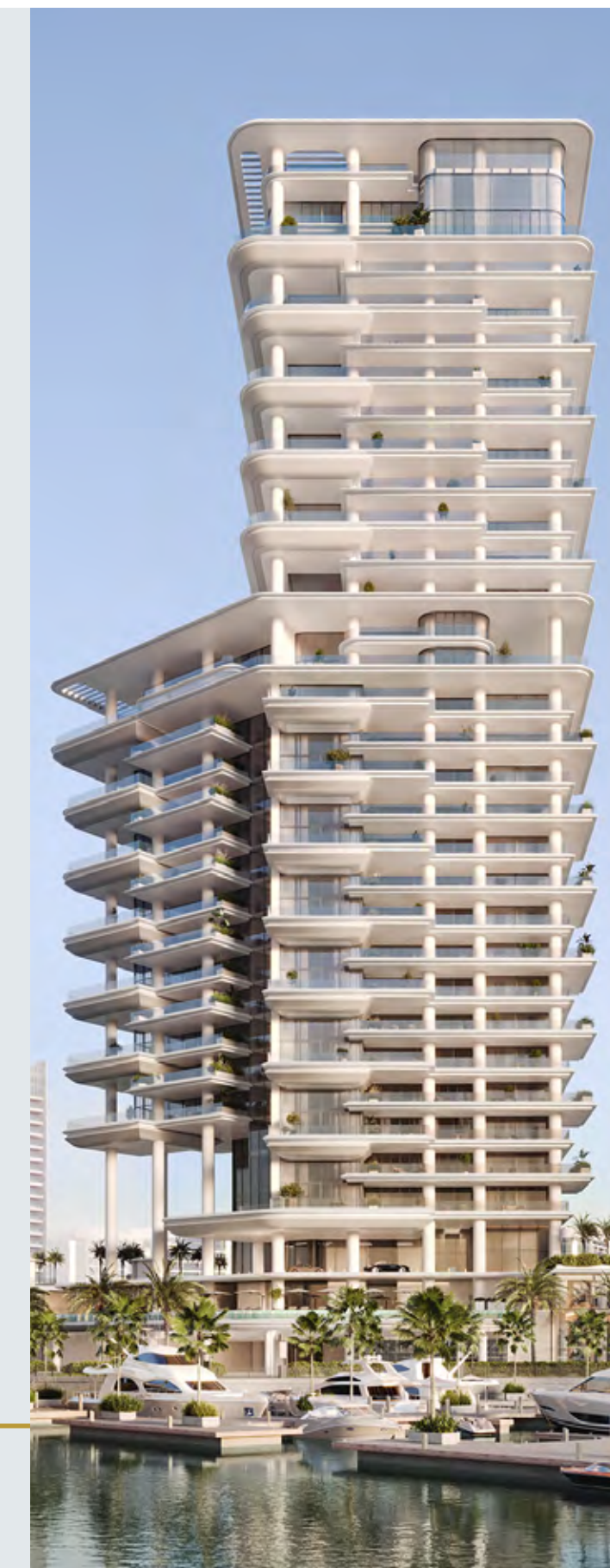
SKY  
RESIDENCES



PENTHOUSES



MARINA  
RESIDENCES



+150m

+90m

Marasi Marina





## Double-Height *Living*

Upon entering, you'll be welcomed by a double-height formal living area - an elegant space designed for entertaining guests and creating unforgettable moments.

Floor-to-ceiling windows adorn the residence, allowing natural light to flood the rooms and overlook all that Dubai has to offer.











## An Outdoor *Oasis*

Step onto the grand terrace that spans the entire facade of your unit, curving around to the back, providing you with a sweeping panorama of Marasi Bay's waters and the bustling city beyond.

Your private oasis awaits with a sparkling pool and sundeck, surrounded by the inspiring energy of the city.





## Master *Bedroom*

The master bedroom has been thoughtfully designed to face the panoramic vistas with direct access to the terrace. As you prepare for your day or wind down in the evening, the beauty and energy of Dubai become an integral part of your daily ritual, reminding you of the magnificence that surrounds your waterside abode.





## Master *Bathroom*

As you relax in the warm embrace of the water, the mesmerizing cityscape becomes an ever-changing work of art, painting the backdrop for your moments of relaxation.

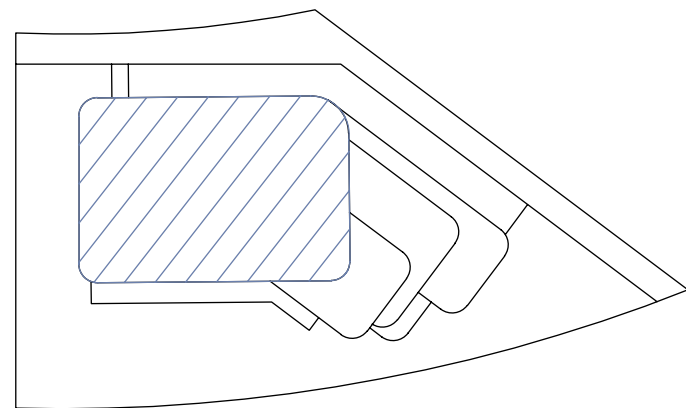
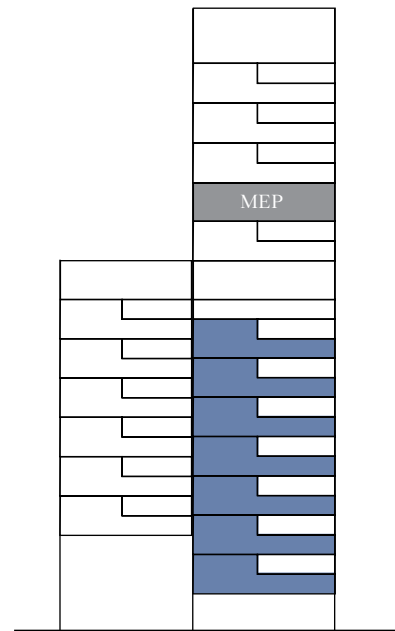
The carefully curated materials and fixtures echo sophistication, transforming your daily routine into a spa-like experience.



# VELA

Dorchester Collection

DUBAI



## TYPICAL FLOOR PLAN

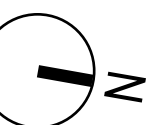
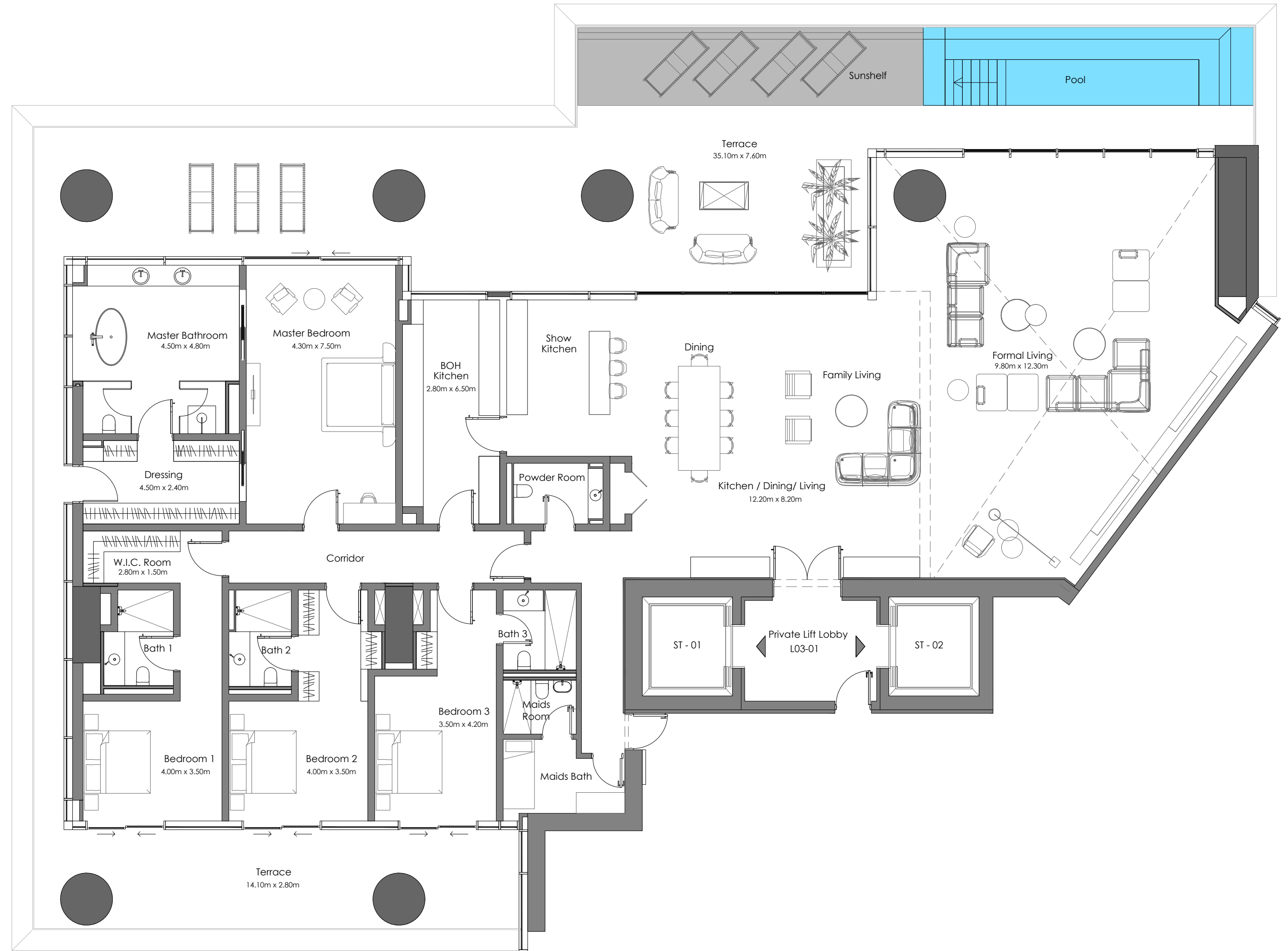
Residence Area:	4,894.89 sq.ft	454.75 sq.m
Terrace Area:	2,478.50 sq.ft	230.26 sq.m
<b>Total Area:</b>	<b>7,373.39 sq.ft</b>	<b>685.01 sq.m</b>



Marasi Marina



Burj Khalifa





*The Jewel  
of Marasi Bay*







Apple Headquarters



Millau Viaduct

## Architectural Excellence

### Foster + Partners

VELA has been crafted by award-winning practice Foster + Partners to embody the fluidity and beauty of the Marasi waterfront. Through majestic height and flowing curves, VELA celebrates the magnificent beauty of this unique destination.

#### Prominent Projects

- Apple Headquarters, California
- Millau Viaduct, France
- Gherkin Tower, London
- VELA, Dorchester Collection, Dubai
- The Lana, Dorchester Collection, Dubai
- ORLA, Dorchester Collection, Dubai



ORLA, Dorchester Collection



The Lana, Dorchester Collection



# Interiors Beyond Compare

**GILLES & BOISSIER**

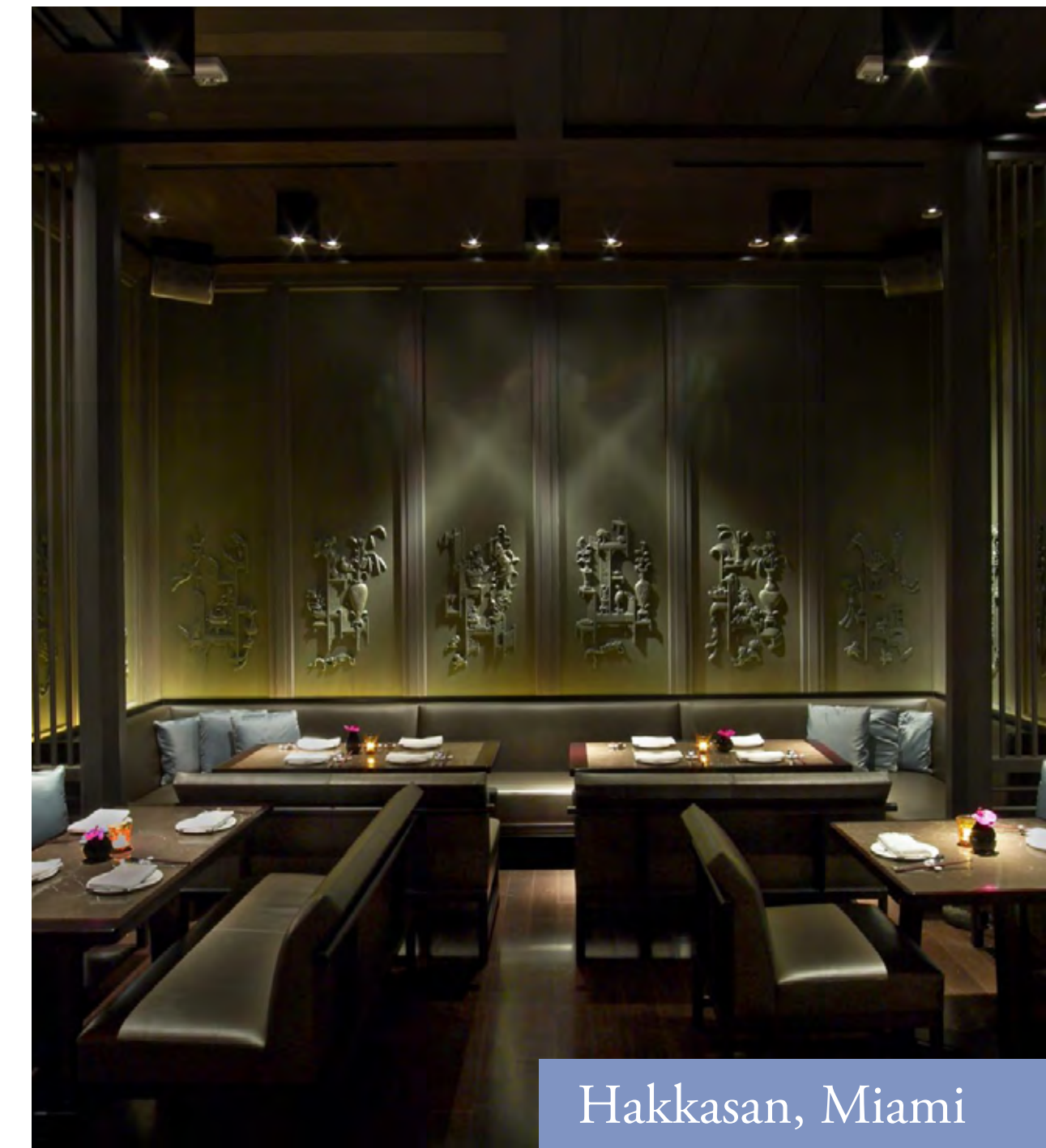
Parisian designer duo Gilles & Boissier have brought their signature refined design to the forefront of OMNIYAT's properties once again. Drawing inspiration from their celebrated work on The Lana Residences, the interiors of VELA exude a striking yet serene ambiance.

## Prominent Projects

- Mandarin Oriental, Paris
- Mandarin Oriental Ritz, Madrid
- Hakkasan restaurants in Dubai and USA
- The Lana, Dorchester Collection, Dubai



Mandarin Oriental Ritz, Madrid



Hakkasan, Miami





*A Sensory  
Arrival*



## *The only waterfront arrival in Marasi Bay*

Welcomed by the delicate music of water and a bold quadruple-height colonnade that rises to frame the soothing beauty of this waterfront location, arriving at VELA is a sensory experience. Layers of water features draw the marina up to the lofty heights of VELA, creating a moment of sheer enchantment where elegance meets sophistication in every direction, from the beauty and drama of the architecture above to the breath-taking panoramic views that surround.











## Exceptional Amenities

Revel in the infinity lap pool that appears to float effortlessly above the marina, or simply relax on the sun deck while admiring the infinite cityscape and the vast expanse of water beyond.

The triple-height gym offers breathtaking panoramic views of the marina. These are accompanied by a cinema room, children's play areas, impeccably furnished meeting rooms, and a private spa suite and salon.





## VELA Amenities

- Main, VIP & Marina Lobbies
- Infinity-Edge Lap Pool
- Triple-Height Gym
- Spa Suite and Salon
- Kids' Room
- Cinema Room
- Meeting Rooms & Lounge
- Security
- Valet





One at Palm Jumeirah

The Lana



## A World of Privileges

As a VELA homeowner, you're invited to immerse yourself in a world of unparalleled benefits, including access to a range of exceptional amenities across selected OMNIYAT properties.

Indulge in a complementary membership program that grants entry to The Lana hotel facilities and spa. Golf-buggy service is available on hand for easy transportation along the promenade.

Embrace seaside leisure with access to the Beach Club at One at Palm Jumeriah by OMNIYAT. The glorious 100-metre white sand private beach is managed by The Lana, Dorchester Collection and features a private jetty and direct access to the waterfront promenade. For the ultimate voyage, a 'flying' yacht can be arranged to sail you away from Marasi Bay, directly arriving to the jetty.



## Outstanding Hospitality

Beyond the elegance and enchantment of premium design, a lifestyle of comfort and ease awaits at the hands of Dorchester Collection's legendary service.

Here, owners enjoy the luxury and freedom of a private home with the added convenience and prestige of outstanding service aligned with this world-class reputation.

Managed by

 *Dorchester Collection*

### *Classic*

- Common area maintenance
- 24/7 Residence concierge
- Doorman and porter services
- Valet parking
- Lifeguard and gym service
- 24/7 Security services

### *À La Carte*

- Housekeeping
- Laundry
- Maintenance
- Bespoke in-residence catering services
- One-off dining events & functions
- Floristry services
- Bookings, reservations & appointments
- Five-star experiences at home





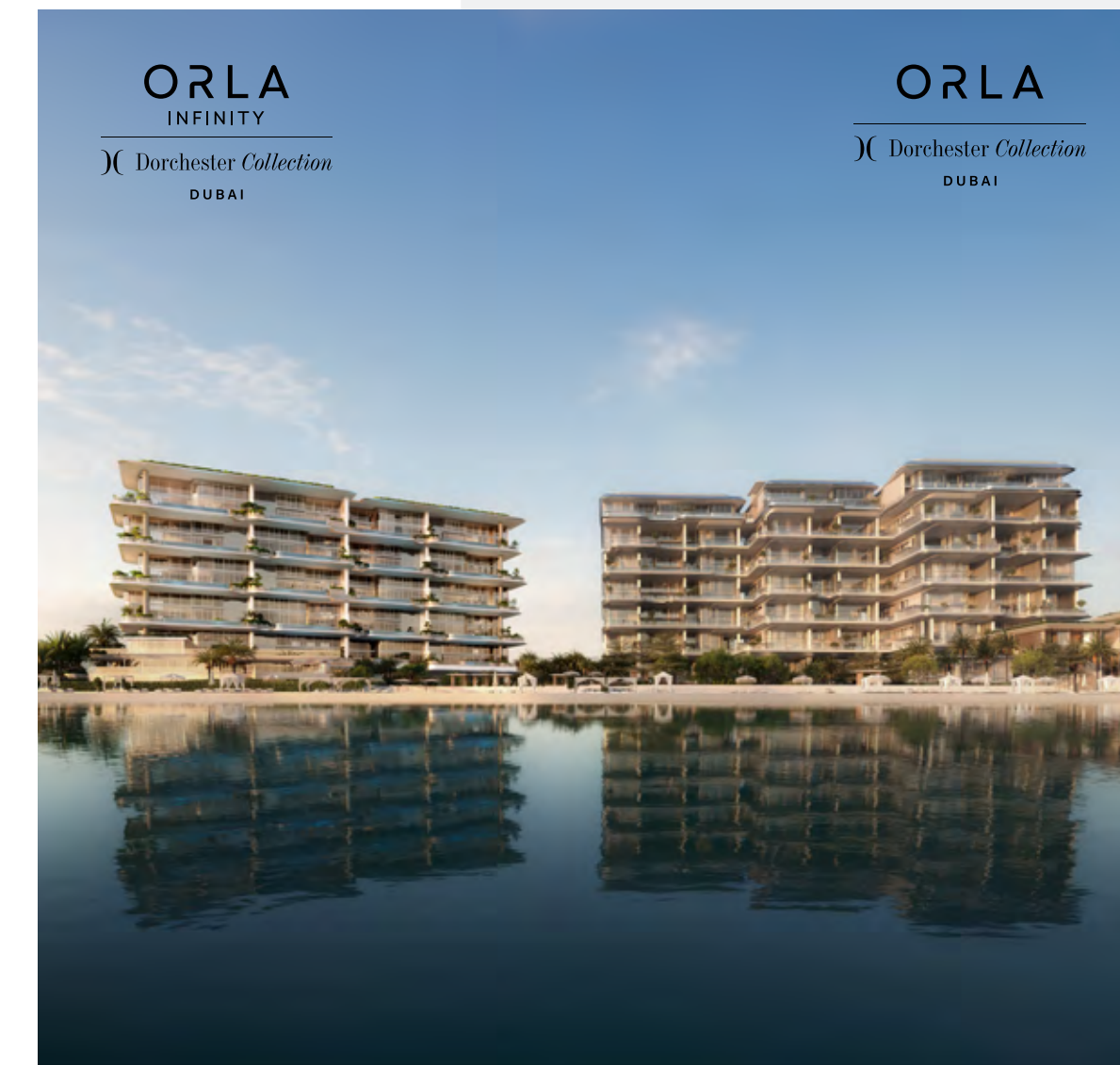
# OMNIYAT

THE ART OF ELEVATION

OMNIYAT is a renowned developer of luxurious architectural masterpieces. The Art of Elevation embodies our dedication to imagining the extraordinary and building it into reality. We elevate the exceptional to create immersive living masterpieces framed by Dubai's iconic skylines.

Since our establishment in 2005, OMNIYAT has redefined each project as an extraordinary, rare piece of art, partnering with global pioneers such as Foster + Partners, Zaha Hadid, Gilles et Boissier, Dorchester Collection and more.

The OMNIYAT touch lies in our ability to enhance experiences and shape the future of luxury living.





# OMNIYAT

THE ART OF ELEVATION